

PROGRAM 2017 ISSUE 1  
 Tickets on sale Feb 2017. More info at 107.org.au.

FEB  
 2017  
 MAR



TIM BISHOP

**NEAR AND NOW**

This suite of short-form, night-long performance events transforms the venue over four weekends in Feb/March. Near and Now is for audiences who love their freshly-made, edgy performance alive and kicking - from installation, to intersectional drag, to post-dramatic theatre... with DJs, dancing and drinks til late.

Presented by Intimate Spectacle. Curated by Theatre Kantanka, Moogahlin Performing Arts with Tim Bishop & Mod Productions, Martin del Amo, and post.

ReLoad  
 Contemporary Contemporary Contemporary  
 Koori Gras  
 Let's Dance

FESTIVAL

EXHIBITION

**BLAK MIRROR**

An exhibition featuring emerging, early career, regional, local and interstate multidisciplinary artists reflecting on their view of Australian society through a Black lens and filter. The artists' work gazes into the eyes of non-Aboriginal people and reflects the current realities of being Aboriginal today, whilst holding a mirror up to Australian society.

EXHIBITION: 18-29 JAN 2017  
 OPENING WEDNESDAY 18 JAN | 6-9PM

Curated by Jason Wing



EXHIBITION + FESTIVAL



JULIE VULCAN

**ECSTASY**

A three day curated program across multiple spaces within 107, focused around the theme 'Ecstasy'. This exciting program will include an art exhibition, live art in the glass stairwell, dance performances by 'Whip It' collective, tantalizing DJ and live act music performances with more still to be announced!

Curated by Clayton Thomas, Julie Vulcan, Nick Wales and Victoria Hunt.

FESTIVAL: 16-17 MAR 2017



BEN ADORJANI

**THE NEW PLOT**

107 and Actors Centre Australia launch The New Plot, a new development award for Australian Playwrights. This initiative has been created to foster professional development for writers and actors to bring new Australian stories to the stage.

Six finalist scripts will be performed in March 2017, with one writer receiving an award package including \$10,000 cash.

PERFORMANCE: 29 MAR - 9 APRIL.

More info at [thenewplot.org](http://thenewplot.org)

PERFORMANCE

107 is made, not designed, through the shared contribution of many individuals, organisations and supporters. To give your support, donate today:

107.ORG.AU/DONATE



THANK YOU!

These initiatives would not be possible without the power of partnership. All of the Partners are generously investing because of their commitment to creating places where people thrive and live creatively.



PRINCIPAL PARTNER



Re|



MAJOR PARTNERS

HAVEN'T HEARD OF US?



Most of the art we get to experience is through a lens of perfectionism. Clinical spaces, polished concrete, judgmental glances. Snob, critics, wank.

At 107 we cultivate spaces for emerging creatives to thrive. Our floors are proudly un-polished, because the truth is, all art has dirty beginnings.

Stepping into 107 is a bit like stepping inside the creative mind. Experiments happen and shit gets weird - but ultimately great work emerges from a rich, creative culture.

So come on in and discover creativity in its natural habitat. You're all welcome!

**STAY CONNECTED**

f @107projects  
 @107projectsinc

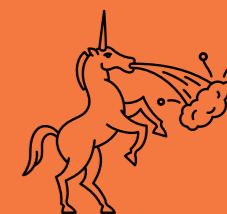
107.ORG.AU  
 107 REDFERN ST,  
 REDFERN, 2016 NSW

OPEN TUES-SUNDAY  
 11AM TO 7PM

**TRANSPORT**

Bus 305, 308, 309, 310  
 Redfern Station  
 Ride or Walk

COVER PHOTOGRAPH: BEN ADORJANI



It is with great excitement and pleasure that we unveil this slice of our 2017 program of "107 Presents".

Each work is designed to stimulate the creative life of our community and is an expression of our support for provocative engagement with our audiences and supporters. We value and encourage experimentation through risk-taking, believing that the new perspectives which emerge can enrich our understanding of ourselves and our place in the world.

The Artist Residency Program, Near and Now, Ecstasy and The New Plot, take centre stage and invite us to engage, feel, respond and reflect. We are committed to developing and deepening our conversations with our community of supporters through our work and that of our extraordinary artists. I invite you to explore your own creativity, in collaboration with us and on behalf of the Board and Staff, extend to each of you a warm and heartfelt welcome.

Mary Lynne Pidcock - Chair

ISSUE 1 JAN - APR 2017



GET YOUR HEAD IN THE CLOUDS

107 PRESENTS